



©2007 Frank Betz Assoc. Inc.



AN EXCLUSIVE COLLECTION OF CUSTOM DESIGNED HOMES

info@ritz-craft.com

www.ritz-craft.com

Exclusive Design Collection



©2007 Frank Betz Assoc. Inc.

TWO STORY PLANS



©2010 Frank Betz Assoc. Inc.

STORY & A HALF PLANS



©2010 Frank Betz Assoc. Inc.

ONE STORY PLANS

by

Ritz-Craft
CORPORATION

RITZ-CRAFT CORPORATION

Approved homebuilders are independent business entities
and are not agents of Ritz-Craft Corporation.

Due to occasional updating of building codes and Ritz-Craft's continuous
product improvement, specifications are subject to change without prior
notification. Be sure to request a copy of current specifications from your
selected homebuilder.

Your Approved Ritz-Craft Builder:

Adelle



Ritz-Craft
CORPORATION



©2010 Frank Betz Assoc. Inc.

the Adelle

1973 sq. ft.

4 bedrooms

2 1/2 baths

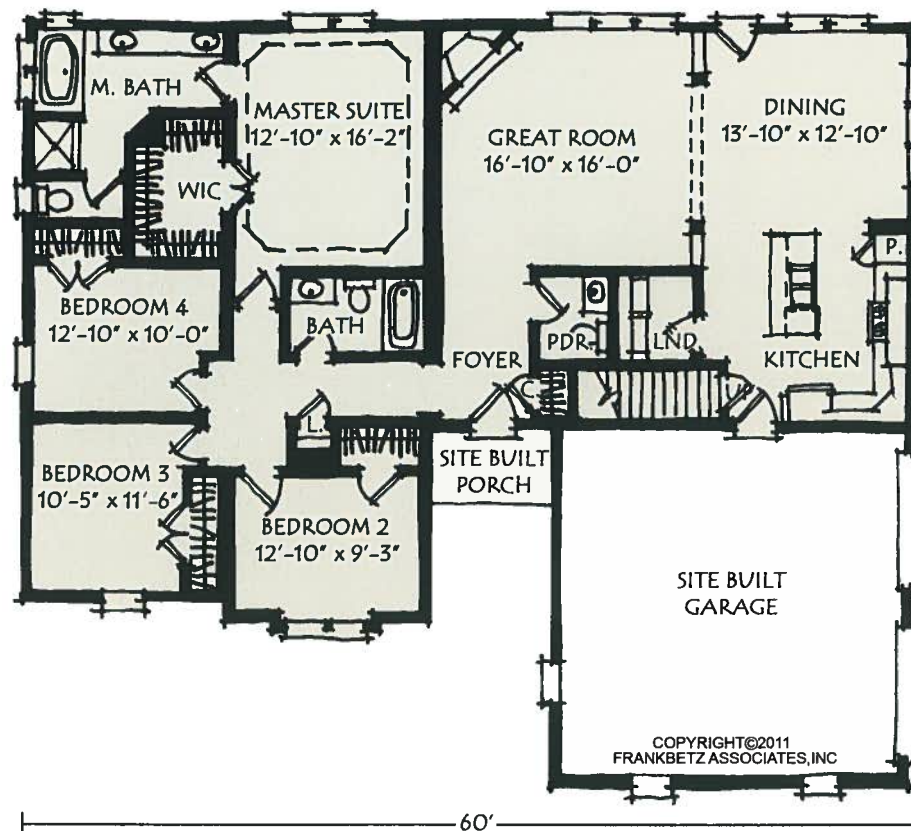
- Double gable roof and hip roof
- Twin boxed bay window with shed roof
- Leaded glass front door with twin porch lamps
- Shingled eave return and rectangular louver
- Accepts front or side entry garage

Artist renderings depict homes as they may be built on a typical site. Renderings may include optional or site installed features. Refer to "Frank Betz by Ritz Craft" specifications and be sure to thoroughly discuss all aspects of your building project with your homebuilder.



the Adelle

- Hearth kitchen with large island bar
- Elegant master bath with platform tub, deep shower and decorative angled niche
- Tray ceiling in master suite
- Drywall columns and wood-capped half-walls between dining and great room
- Large great room with optional corner fireplace available.



All Frank Betz by Ritz Craft home plans include an interior stair area providing access to your full/walk-out basement. Each plan can be modified for a crawl space foundation. Design considerations to accommodate local codes, and site specific requirements for high wind zones, seismic conditions and/or heavy snow load roof design may require floor plan adjustments. Please thoroughly discuss local requirements and all aspects of your home building project with your selected home builder.



AN EXCLUSIVE COLLECTION OF CUSTOM DESIGNED HOMES

info@ritz-craft.com

www.ritz-craft.com

Amanda



by

Ritz-Craft
CORPORATION



©2010 Frank Betz Assoc. Inc.

the Amanda

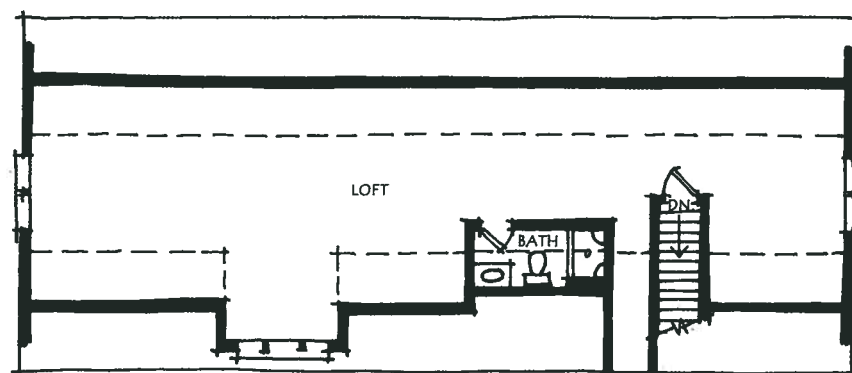
2112 sq. ft.

3 bedrooms

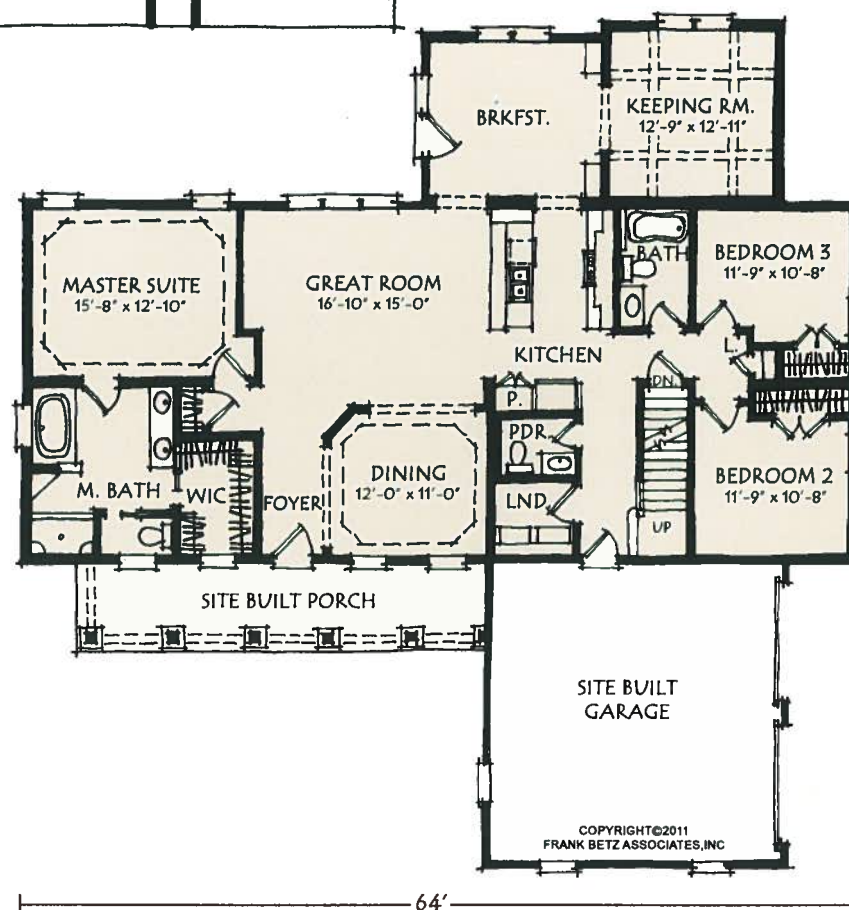
2 1/2 baths

- Leaded glass front door with twin porch lamps
- Large gabled front dormer with triple window
- Accepts front or side entry garage
- Upper level provides 1062 sq. ft. bonus space

Artist renderings depict homes as they may be built on a typical site. Renderings may include optional or site installed features. Refer to "Frank Betz by Ritz Craft" specifications and be sure to thoroughly discuss all aspects of your building project with your homebuilder.



1062 sq. ft. available



the Amanda

- Hearth kitchen with large peninsula bar
- Elegant master bath with platform tub and deep shower
- Tray ceilings in master suite and dining room
- Twin "hutch" cabinets in breakfast nook
- Coffered ceiling in keeping room
- Option for built-in cabinetry and fireplace in keeping room

All Frank Betz by Ritz Craft home plans include an interior stair area providing access to your full/walk-out basement. Each plan can be modified for a crawl space foundation. Design considerations to accommodate local codes, and site specific requirements for high wind zones, seismic conditions and/or heavy snow load roof design may require floor plan adjustments. Please thoroughly discuss local requirements and all aspects of your home building project with your selected home builder.



Palmetto II



by

Ritz-Craft
CORPORATION



©2010 Frank Betz Assoc. Inc.

the Palmetto II

2724 sq. ft.

3 bedrooms

2 1/2 baths

- Transitional style with courtyard garage entry
- Eight foot craftsman style entry door with side lites
- Large gabled front dormer with triple window
- Shed dormer with twin window for upper level (rear of house)
- Upper level provides 1012 sq. ft. bonus space

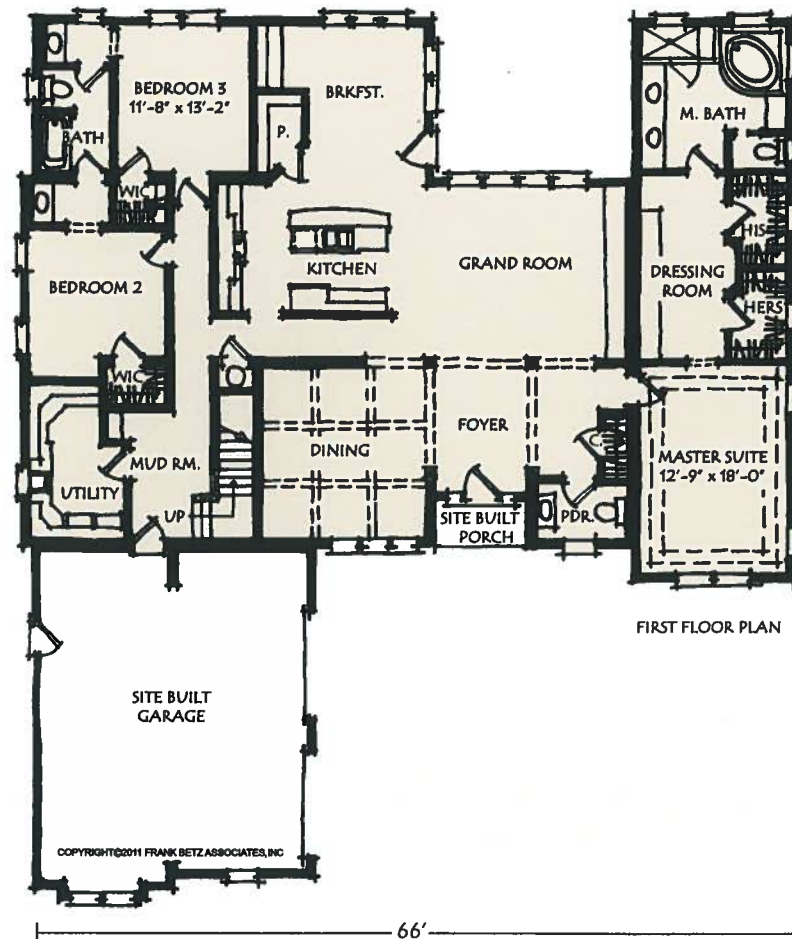
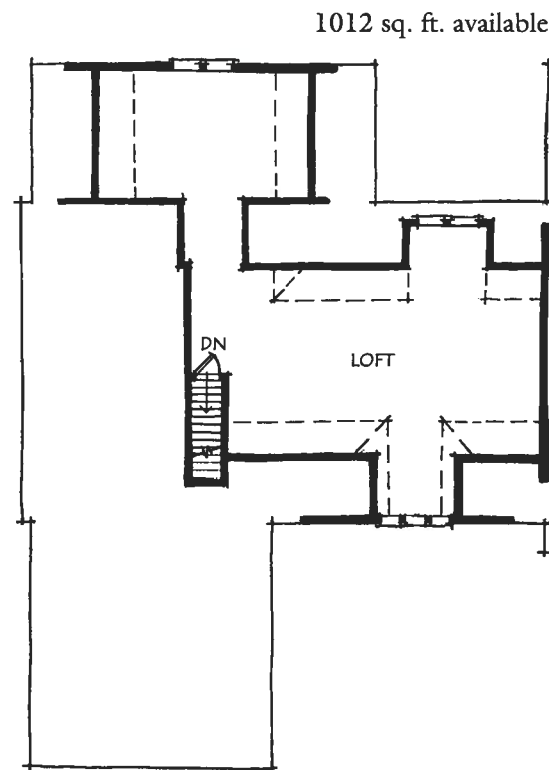
Artist renderings depict homes as they may be built on a typical site. Renderings may include optional or site installed features. Refer to "Frank Betz by Ritz Craft" specifications and be sure to thoroughly discuss all aspects of your building project with your homebuilder.

PALMETTO II



the Palmetto II

- Hearth kitchen with island bar
- Walk-in pantry
- Elegant formal dining room with coffered ceiling
- Oversized utility, work-station room with built-in cabinetry, utility sink and computer desk
- Jack & Jill style bath shared by BR's 2 & 3
- Large great room with location for optional fireplace and cabinetry
- Amazing 600 sq. ft., resort style master retreat with spa bath, built-in dressing area cabinetry and double tray ceiling in sleep suite



All Frank Betz by Ritz Craft home plans include an interior stair area providing access to your full/walk-out basement. Each plan can be modified for a crawl space foundation. Design considerations to accommodate local codes, and site specific requirements for high wind zones, seismic conditions and/or heavy snow load roof design may require floor plan adjustments. Please thoroughly discuss local requirements and all aspects of your home building project with your selected home builder.



Claire



by

Ritz-Craft
CORPORATION



©2010 Frank Betz Assoc. Inc.

the Claire

2883 sq. ft.

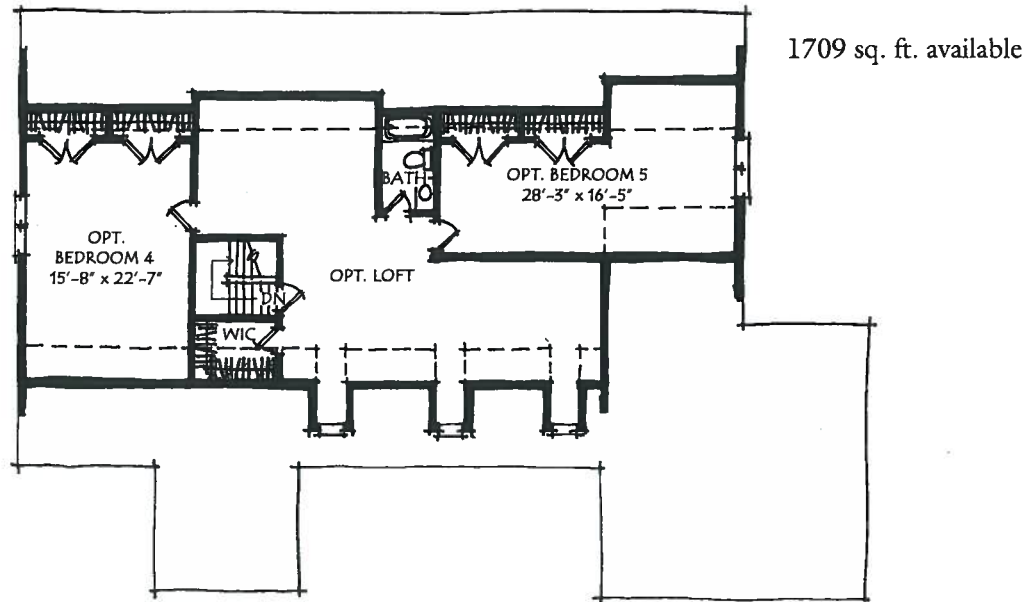
3 to 4 bedrooms

3 baths

- Charming transitional Cape Cod style
- Three upper level window-dormers
- Leaded glass front door
- Shingled gable eave and half-circle window
- Accepts front or side entry garage
- Upper level provides 1709 sq. ft. bonus space

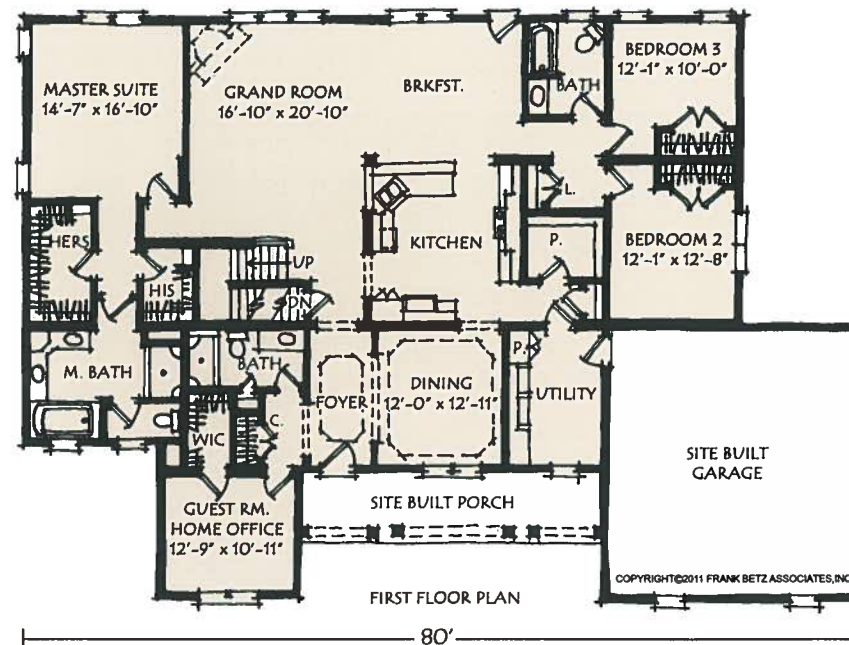
Artist renderings depict homes as they may be built on a typical site. Renderings may include optional or site installed features. Refer to "Frank Betz by Ritz Craft" specifications and be sure to thoroughly discuss all aspects of your building project with your homebuilder.

CLAIRE



the Claire

- Spacious, open plan
- Hearth kitchen with large dining bar
- Walk-in pantry
- Elegant entry with tray ceilings in foyer and dining room
- Large master suite with his & her closets
- Spa-like master bath with platform tub and deep shower



All Frank Betz by Ritz Craft home plans include an interior stair area providing access to your full/walk-out basement. Each plan can be modified for a crawl space foundation. Design considerations to accommodate local codes, and site specific requirements for high wind zones, seismic conditions and/or heavy snow load roof design may require floor plan adjustments. Please thoroughly discuss local requirements and all aspects of your home building project with your selected home builder.



Darla



by

Ritz-Craft
CORPORATION



©2010 Frank Betz Assoc. Inc.

the Darla

2063 sq. ft.

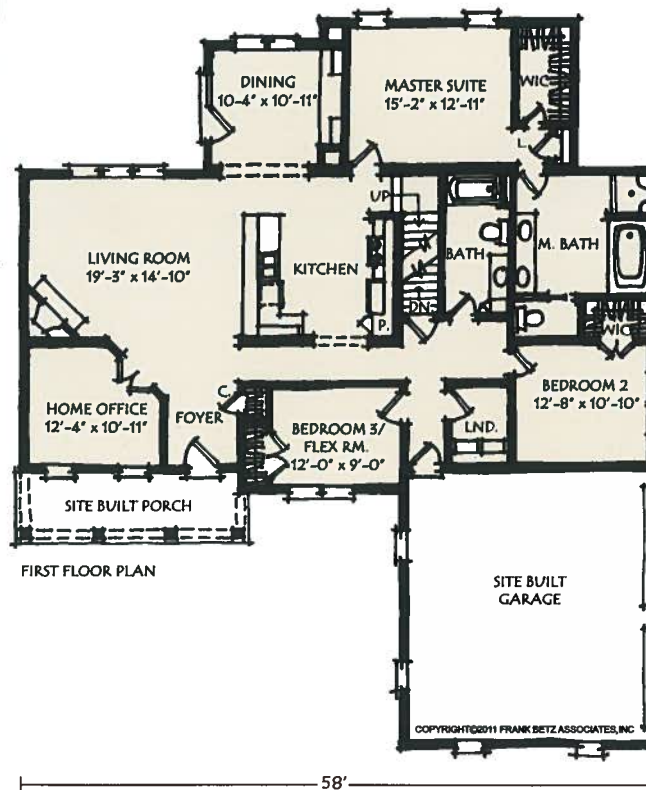
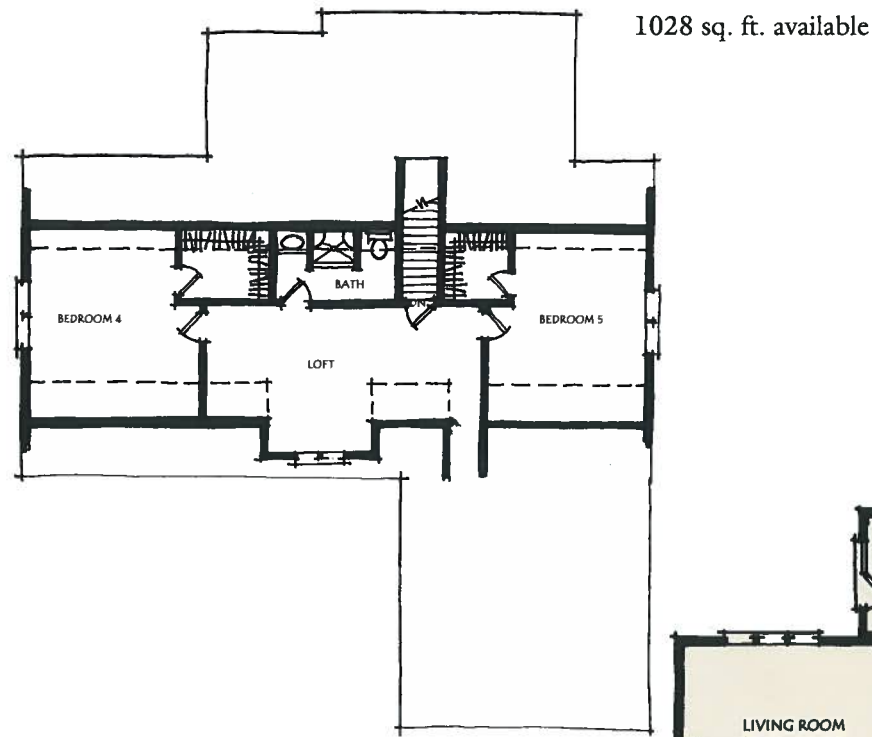
3 bedrooms

2 baths

- Charming Cottage style home
- Leaded glass front door with twin porch lamps
- Large shed dormer with twin window
- Accepts front or side entry garage
- Upper level provides 1028 sq. ft. bonus space

Artist renderings depict homes as they may be built on a typical site. Renderings may include optional or site installed features. Refer to "Frank Betz by Ritz Craft" specifications and be sure to thoroughly discuss all aspects of your building project with your homebuilder.

DARLA



the Darla

- Open floor plan
- Spacious home office with double glass doors
- Large living room with optional corner fireplace location
- Rear-facing dining area with built-in hutch cabinetry
- Master bath includes platform tub and deep shower

All Frank Betz by Ritz Craft home plans include an interior stair area providing access to your full/walk-out basement. Each plan can be modified for a crawl space foundation. Design considerations to accommodate local codes, and site specific requirements for high wind zones, seismic conditions and/or heavy snow load roof design may require floor plan adjustments. Please thoroughly discuss local requirements and all aspects of your home building project with your selected home builder.

Ritz-Craft
CORPORATION

info@ritz-craft.com

AN EXCLUSIVE COLLECTION OF CUSTOM DESIGNED HOMES

www.ritz-craft.com

Elizabeth



by

Ritz-Craft
CORPORATION



©2010 Frank Betz Assoc. Inc.

the Elizabeth

2155 sq. ft.

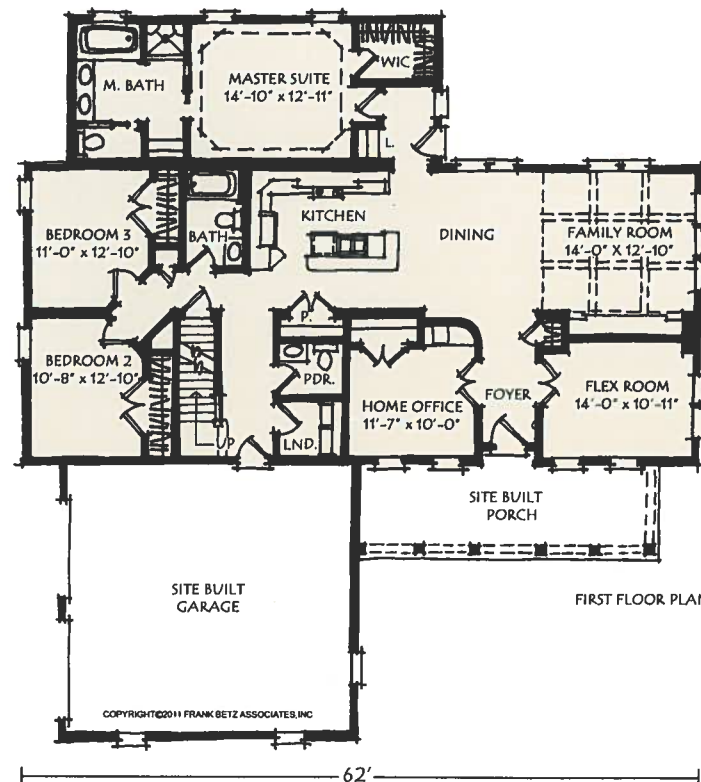
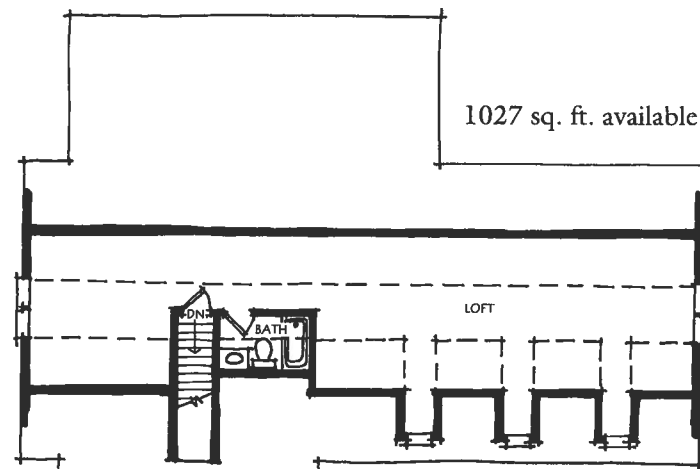
3 to 4 bedrooms

2 1/2 baths

- Classic Cape Cod style
- Leaded glass front door with twin porch lamps
- Three upper level window-dormers
- Accepts front or side entry garage
- Upper level provides 1027 sq. ft. bonus space

Artist renderings depict homes as they may be built on a typical site. Renderings may include optional or site installed features. Refer to "Frank Betz by Ritz Craft" specifications and be sure to thoroughly discuss all aspects of your building project with your homebuilder.

ELIZABETH



the Elizabeth

- Hearth kitchen with large island bar
- Home office with built-in cabinetry and double glass door
- Spacious flex room for work-out or hobby space
- Large family room with coffered ceiling and built-in entertainment cabinetry
- Spacious master bedroom provides flexible furniture placement
- Elegant master bath with platform tub and deep shower

All Frank Betz by Ritz Craft home plans include an interior stair area providing access to your full/walk-out basement. Each plan can be modified for a crawl space foundation. Design considerations to accommodate local codes, and site specific requirements for high wind zones, seismic conditions and/or heavy snow load roof design may require floor plan adjustments. Please thoroughly discuss local requirements and all aspects of your home building project with your selected home builder.



Glen Oaks



by

Ritz-Craft
CORPORATION



©2010 Frank Betz Assoc. Inc.

the Glen Oaks

2358 sq. ft.

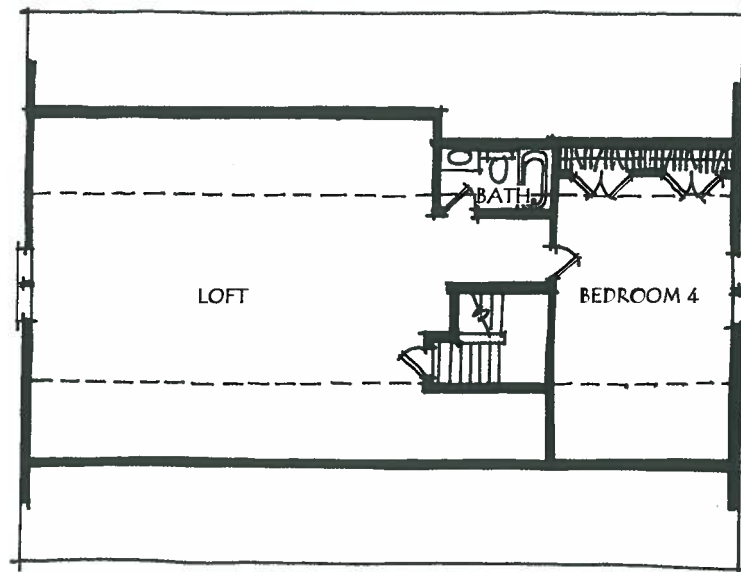
3 bedrooms

2 1/2 baths

- Large, transitional style ranch
- Leaded glass front door with matching leaded side lites and transom
- Twin front porch lamps
- Large gabled front dormer with oval vent
- Oval front window
- Accepts front or side entry garage
- Upper level provides 1482 sq. ft. bonus space

Artist renderings depict homes as they may be built on a typical site. Renderings may include optional or site installed features. Refer to "Frank Betz by Ritz Craft" specifications and be sure to thoroughly discuss all aspects of your building project with your homebuilder.

GLEN OAKS

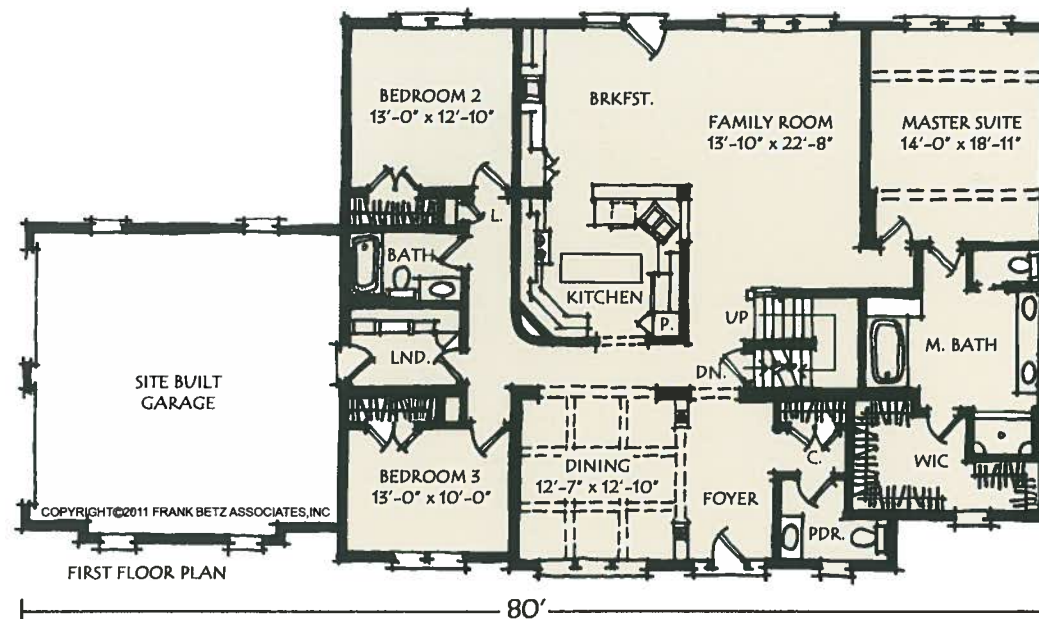


1482 sq. ft. available



the Glen Oaks

- Hearth kitchen with peninsula bar
- Large breakfast area with built-in cabinetry and wet bar sink
- Elegant formal dining room with coffered ceiling
- Open, spacious family room
- Large, rear-facing master bedroom with beamed ceiling
- Master bath with platform tub and deep shower
- Huge walk-in master closet



All Frank Betz by Ritz Craft home plans include an interior stair area providing access to your full/walk-out basement. Each plan can be modified for a crawl space foundation.

Design considerations to accommodate local codes, and site specific requirements for high wind zones, seismic conditions and/or heavy snow load roof design may require floor plan adjustments.

Please thoroughly discuss local requirements and all aspects of your home building project with your selected home builder.

Ritz-Craft
CORPORATION

info@ritz-craft.com

AN EXCLUSIVE COLLECTION OF CUSTOM DESIGNED HOMES

www.ritz-craft.com

Brockton



by

Ritz-Craft
CORPORATION



©2010 Frank Betz Assoc. Inc.

the Brockton

2425 sq. ft.

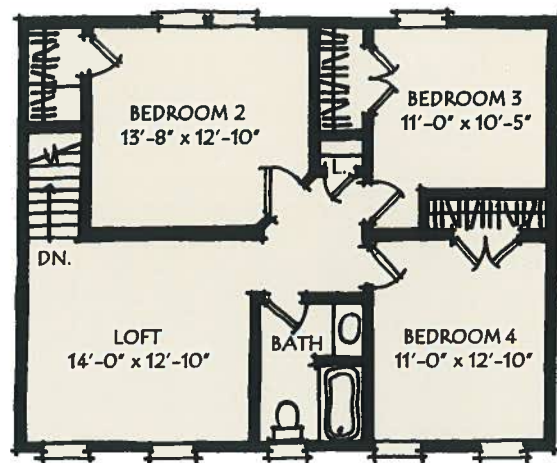
4 bedrooms

2 1/2 baths

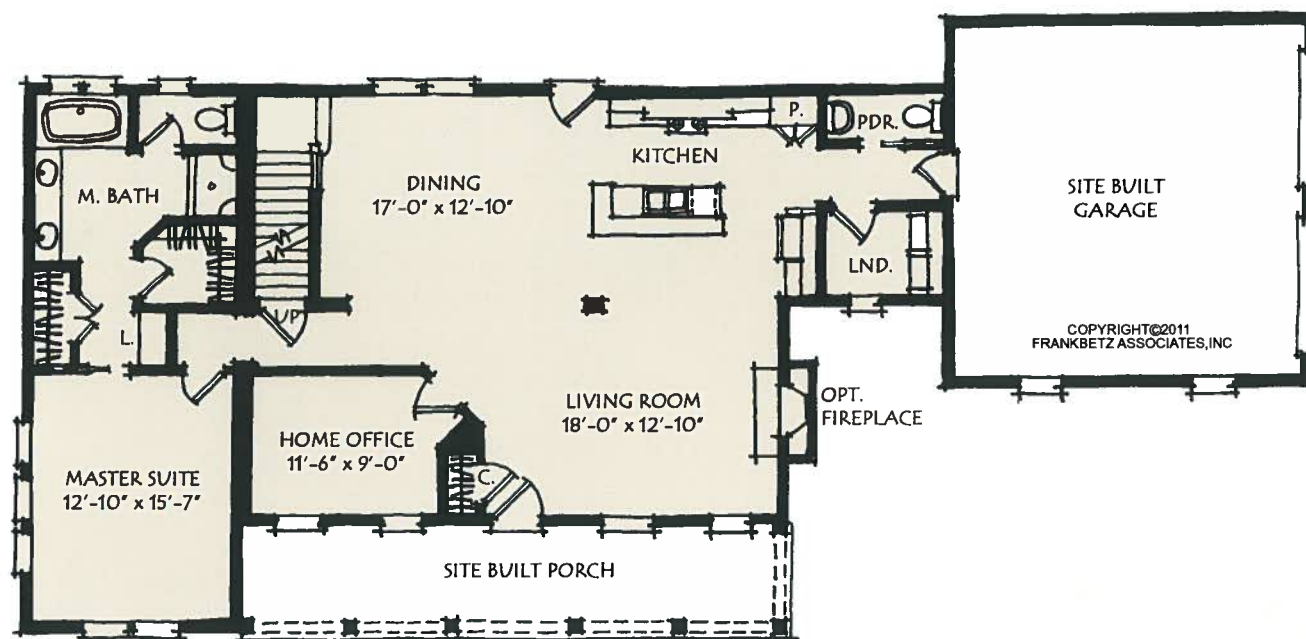
- Classic Colonial styling and symmetry
- Large decorative roof dormer with half-circle vent
- Shingled eave returns at upper gables
- Shingled eave and half-circle vent at master gable
- Eight foot front door with twin porch lamps
- Accepts front or side entry garage

Artist renderings depict homes as they may be built on a typical site. Renderings may include optional or site installed features. Refer to "Frank Betz by Ritz Craft" specifications and be sure to thoroughly discuss all aspects of your building project with your homebuilder.

BROCKTON



SECOND FLOOR PLAN



FIRST FLOOR PLAN

82'



the Brockton

- Open first floor plan with home office
- Elegant first floor master suite with his & her closets
- Spacious master bath with platform tub, a deep shower and double vanity
- Hearth kitchen with large island bar
- Three upper level bedrooms with spacious family loft

All Frank Betz by Ritz Craft home plans include an interior stair area providing access to your full/walk-out basement. Each plan can be modified for a crawl space foundation. Design considerations to accommodate local codes, and site specific requirements for high wind zones, seismic conditions and/or heavy snow load roof design may require floor plan adjustments. Please thoroughly discuss local requirements and all aspects of your home building project with your selected home builder.

